

The purpose of this application note is to describe how to control Reason with the Bitstream 3X, using the Propellerheads remote technology.

Requirements

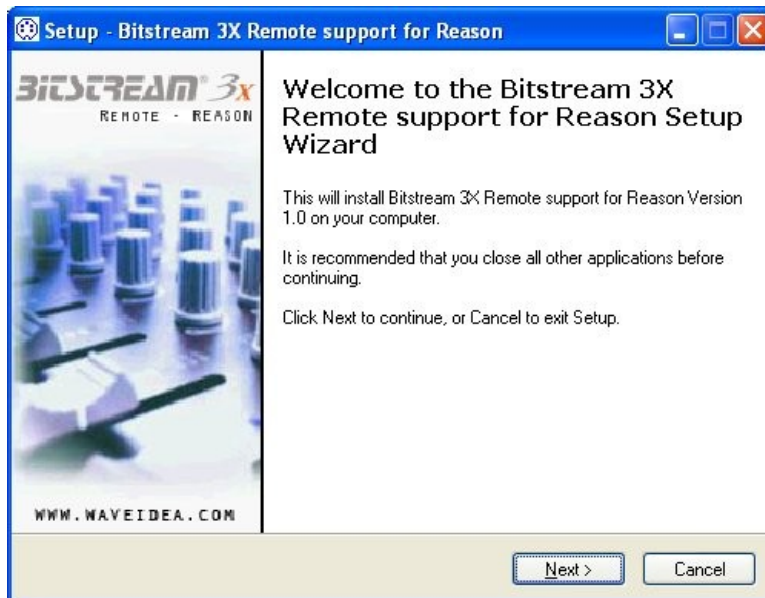
This document only concerns owners of Bitstream 3X featuring built-in **ROM V1.1 or higher**, for older versions, please contact Wave Idea in order to know how to get an up to date firmware version.

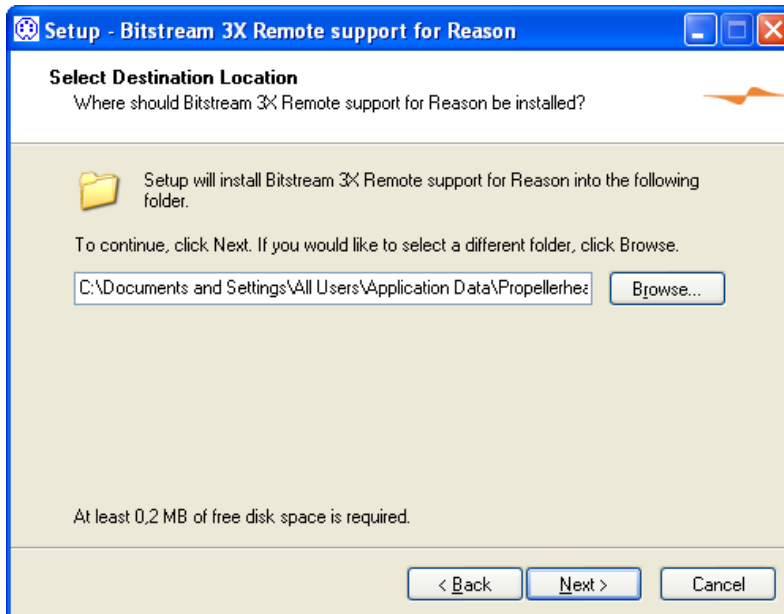
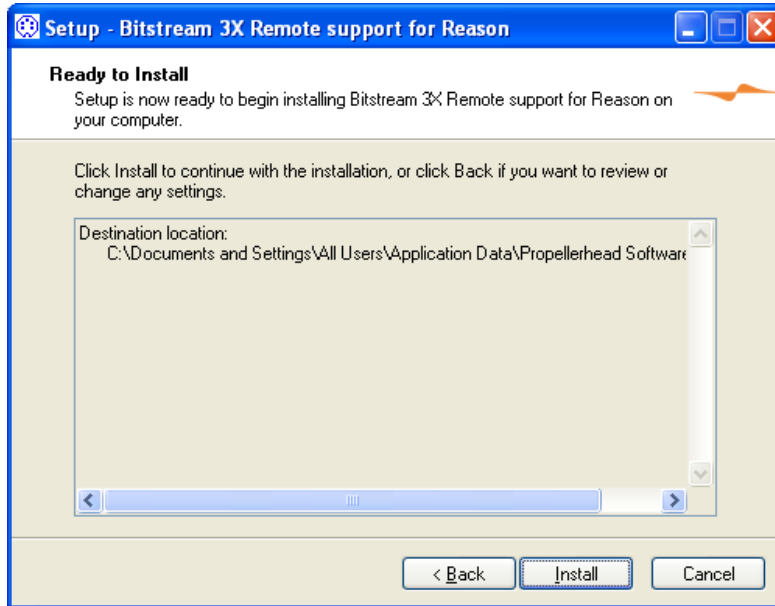
An application (Windows 9x, 2K, Xp, Vista, Mac) is available from Wave Idea website, it allows to install the Bitstream 3X remote support files.

To check Bitstream 3X ROM version, please refer to the user's manual.

Installing the remote files on Windows

Once launched, the dedicated application will install the required files to make the Bitstream 3X fully compliant with the Reason remote technology







The required files are now installed, Reason can be opened.
Go to the preferences menu, control surfaces and keyboard, and click on auto-detect surfaces

Note 1 : The Bitstream 3X must be switched on and the MIDI In/Out or USB cable must be connected

Note 2 : By default, the codecs files are installed as follow :

`\Documents and Settings\All Users\Application Data\Propellerhead Software\Remote\Codecs\MIDI Codecs\Bitstream-3X.png`

`\Documents and Settings\All Users\Application Data\Propellerhead Software\Remote\Codecs\MIDI Codecs\Bitstream-3X.midicodec`

`\Documents and Settings\All Users\Application Data\Propellerhead Software\Remote\Maps\Wave-Idea\Bitstream-3X.remotemap`

If you have installed Reason differently from the default installation, you must check that the Bitstream 3X codecs files are installed to the correct folders.

Installing the remote files on Mac

-Download the .dmg file from WaveIdea website and extract the files to the following folders on your Mac :

`/Library/Application Support/Propellerhead Software/Remote/Codecs/MIDI Codecs/Bitstream-3X.png`

`/Library/Application Support/Propellerhead Software/Remote/Codecs/MIDI Codecs/Bitstream-3X.midicodec`

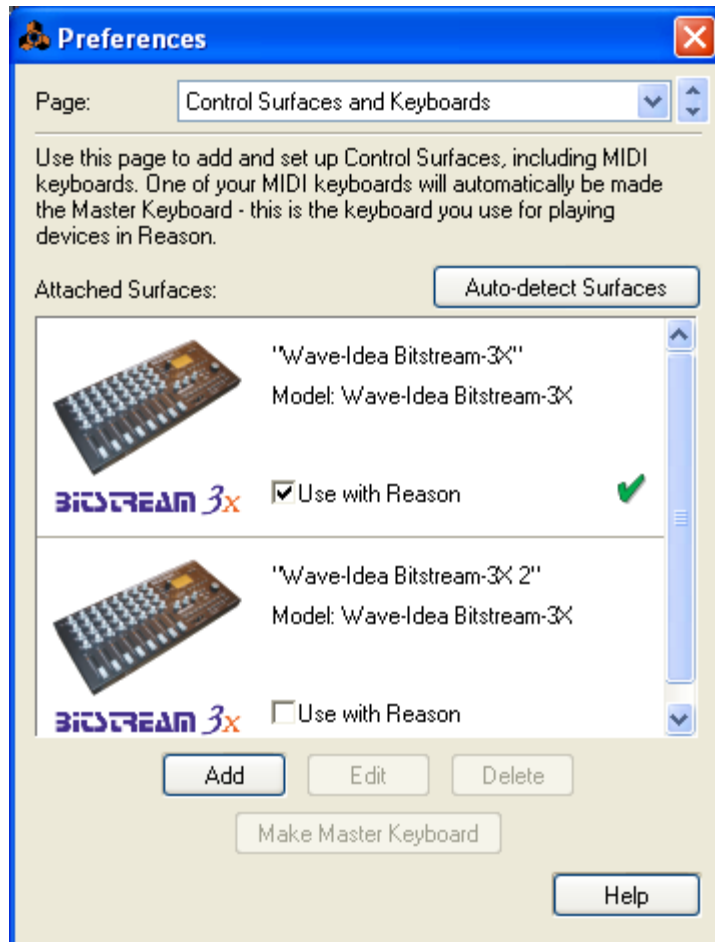
`/Library/Application Support/Propellerhead Software/Remote/Maps/Wave-Idea\Bitstream-3X.remotemap`

In the above directories you should see the other midi codecs available for Reason

- Once copied, you can switch on the Bitstream 3X and wait until it is attached to USB (USB bitmap on the top right of the Bitstream LCD becomes dark).

Reason configuration

Now you can launch Reason and open the remote controls panel, click auto-detect and the Bitstream will be detected and pre-configured to fully control Reason.



The Bitstream 3X will be automatically detected and properly configured to fully control Reason. The auto configuration parameters are :

- The Bitstream 3X group 0 is selected
- The Bitstream 3X will switch to a dedicated Reason Mode

The Bitstream 3X Reason mode

From the firmware V1.1, the Bitstream 3X features a dedicated Reason mode, in addition to the “standard” and “user defined” modes described in the user manual.

This mode is used to fully control Reason, the major changes of this mode, compared to the standard mode, are :

- **Group changes** : Once the user changes the Bitstream 3X groups, a sysex is automatically sent to Reason in order to select the new device to control

AN001 : Bitstream 3X – Reason Remote

- **Groups** : In this special mode, all groups of the Bitstream 3X always send the same MIDI events, Reason will update the controlled device once it receives a group change from the Bitstream 3X front panel
- **LCD** : the LCD will indicate 'Reason mode"
- **MIDI Events** : In this special mode, the Bitstream 3X controls will always send MIDI Ccs.

Accessing this mode is performed using the "Mode" button from the Bitstream 3X front panel. This mode is also automatically selected by Reason once the Bitstream 3X has been properly detected.